



## User manual e-netcamVIEWER

---



## Document Purpose

---

This document describes the functionalities and characteristics of IproNet's remote access and management solution, called e-netcamVIEWER. Any additional information about this solution, the IP Video Management Application e-netcamCLIENT or any other IproNet's system is available on [www.ipronet.es](http://www.ipronet.es).

# Summary

---

<b>INTRODUCTION.....</b>	<b>4</b>
<b>INSTALATION AND CONFIGURATION.....</b>	<b>5</b>
<b>CONFIGURATION.....</b>	<b>7</b>
How to register a server.....	7
How to connect to a server.....	7
See cameras and video patrols.....	9
Recordings.....	13
Task Scheduler.....	15
Language.....	16
<b>APPLICATIONS.....</b>	<b>17</b>
<b>REQUIREMENTS.....</b>	<b>18</b>

## Introduction

The **e-netcamVIEWER** is the IProNet's solution for installations where more than one VIEWER user is required to carry it out. The **e-netcamVIEWER** allows the access to servers in which the **e-netcamCLIENT** applications are running.

The **e-netcamVIEWER** will carry out a direct connection with the cameras themselves in the viewing tasks of live cameras (camera by camera or video patrols) without the need to request the recording equipment.

This characteristic allows you to avoid overloading the recording equipment with additional tasks. The only action carried out by the recording system is to provide a list of cameras with their respective settings to the **e-netcamVIEWER** application.

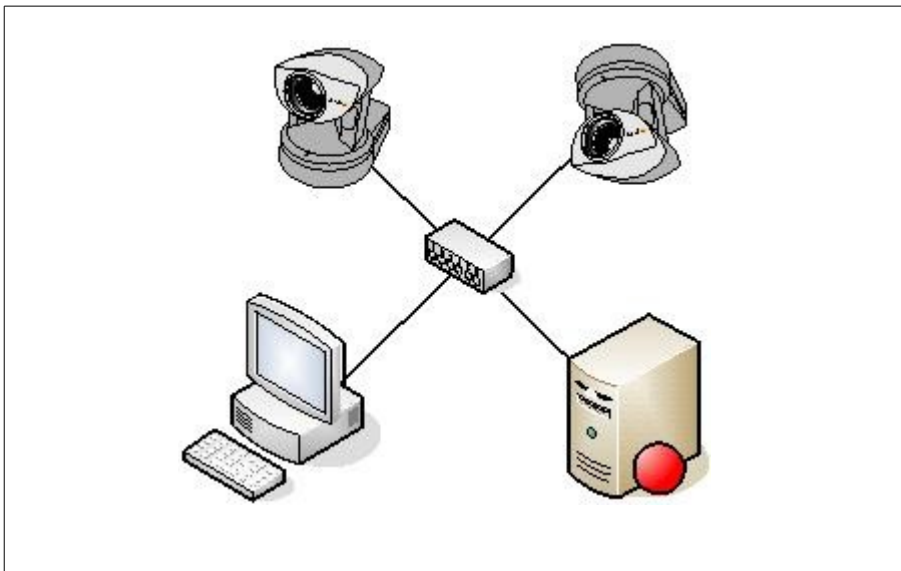


Figure 1. Basic Architecture

# Instalation and Configuration

1. Run the **e-netcamVIEWER** setup file (available on [www.ipronet.es](http://www.ipronet.es)).
2. Once installed, the application has the **e-netcamVIEWER DEMO** version available.
3. If you are using the application without registering it, the images of cameras will be displayed on-screen with an overlay banner with the IproNet logo which will disappear once you have registered the program in an effective manner.



Figure 2. Demo version

4. The **e-netcamVIEWER** application must be registered to lift its restrictions and to be able to use it without restrictions. All the information that is required to carry out the registration process is available on [www.ipronet.es](http://www.ipronet.es).
5. When the program is opened, an icon at the bottom right hand corner of the screen will appear on the task bar. Clicking on the icon with the right hand mouse button will allow you to access the settings menus and system access menus.

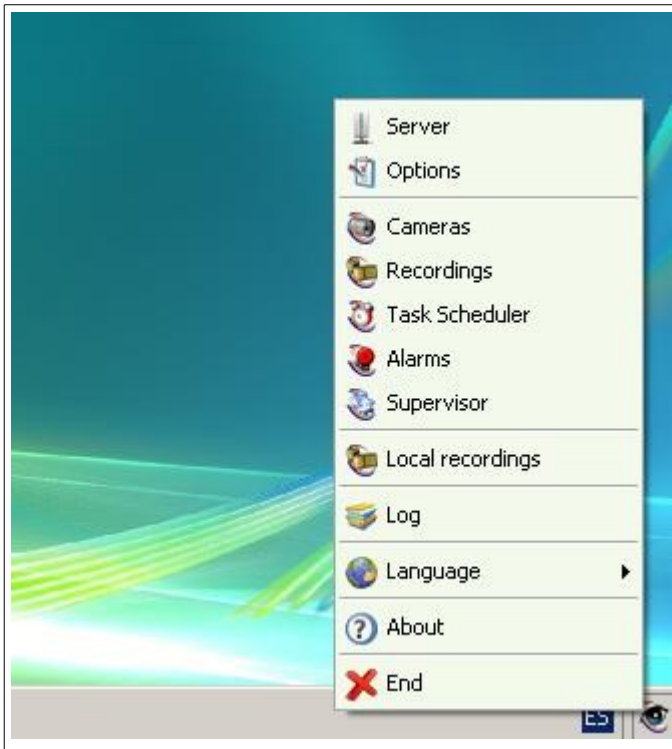


Figure 3. Menu

# Configuration

## *How to register a server*

1. Assign a name that identifies the server that you are connecting to.
2. Assign the IP or URL of the equipment to which you wish to connect.
3. Set the password (the same password set in the **e-netcamCLIENT** system, see the Settings of the application.)
4. Activate the “Dispatcher” tab to enable its use in order to send all the video connections to this service optimizing resources. Activate it in the event that the server you desire to connect to is not found in the same local network as the e-netcamVIEWER application.
5. By clicking on the “**Accept**” button, you will definitively register the server to be connected to.

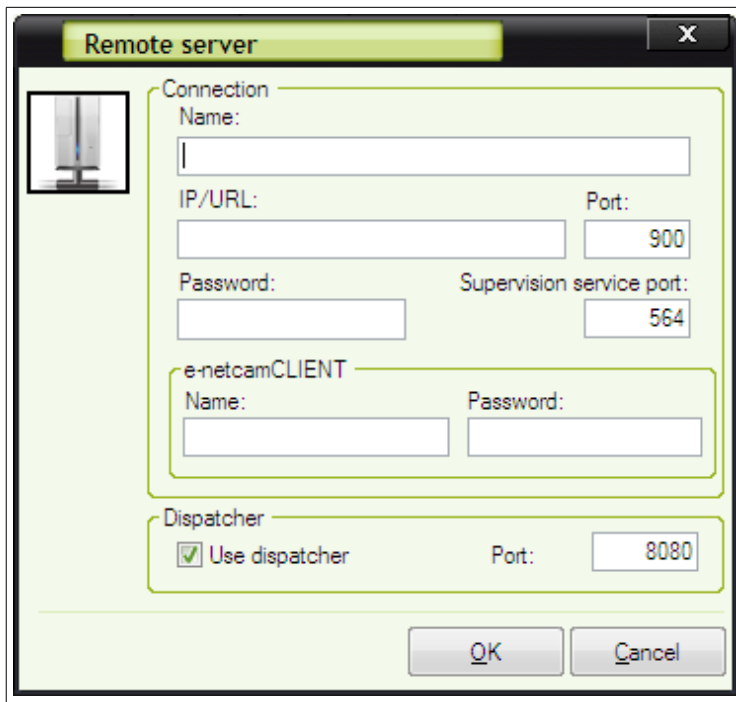


Figure 4. Settings display

## *How to connect to a server*

Once we have registered the server, we can access it by clicking with the right hand mouse button on the **e-netcamVIEWER** icon that appears at the bottom right hand corner of the screen .



Figure 5. Connect to a server

In the list of servers, select the server you want to access and click on the “Accept” button .

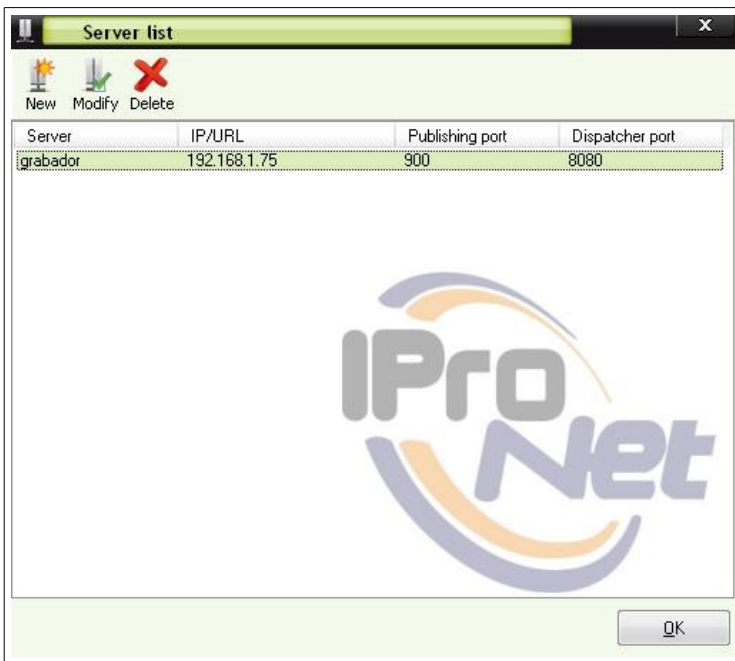


Figure 6. Select the server

The **e-netcamVIEWER** application allows the remote access to IP IProNet video installations in an alternate manner, that is, you can connect to a server at every instance .

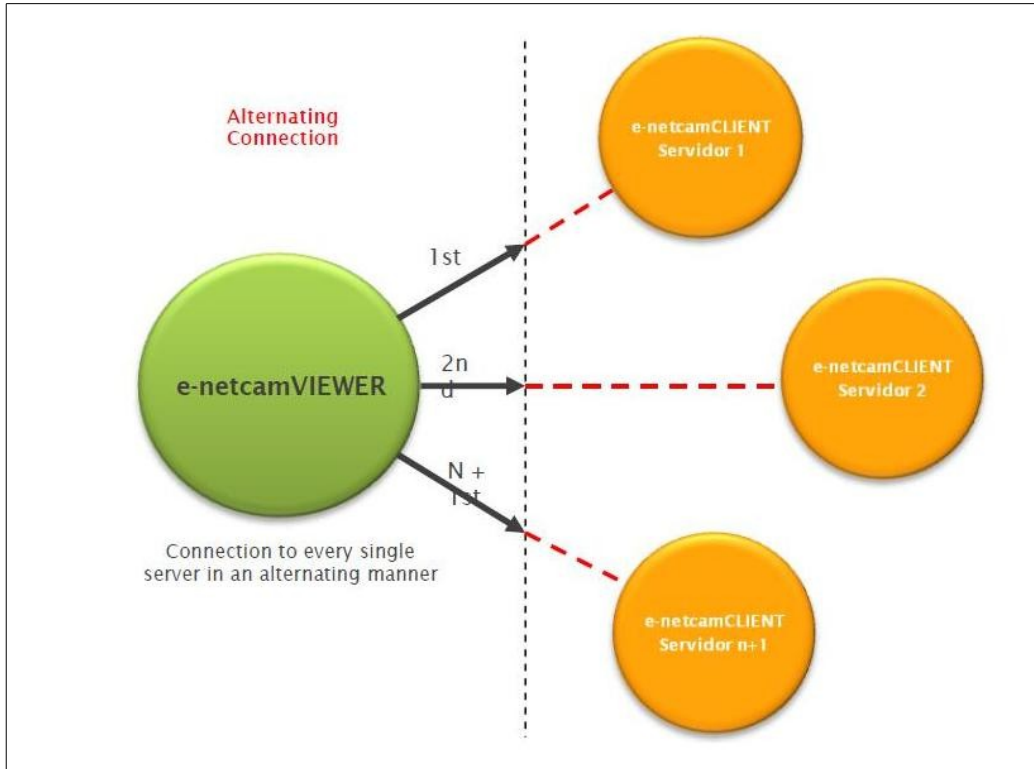


Figure 7. Alternating Connection

### ***See cameras and video patrols***

Selecting the menu option known as "Cameras", the remote system will send to the local computer the list of cameras and groups contained within, presenting them in the same way as it is presented in the e-netcamCLIENT applications .



Figure 8. Select Cameras

The user method is identical in both applications enabling to alternate the viewing types of the desktop containing the cameras and groups in both programs in a similar manner.

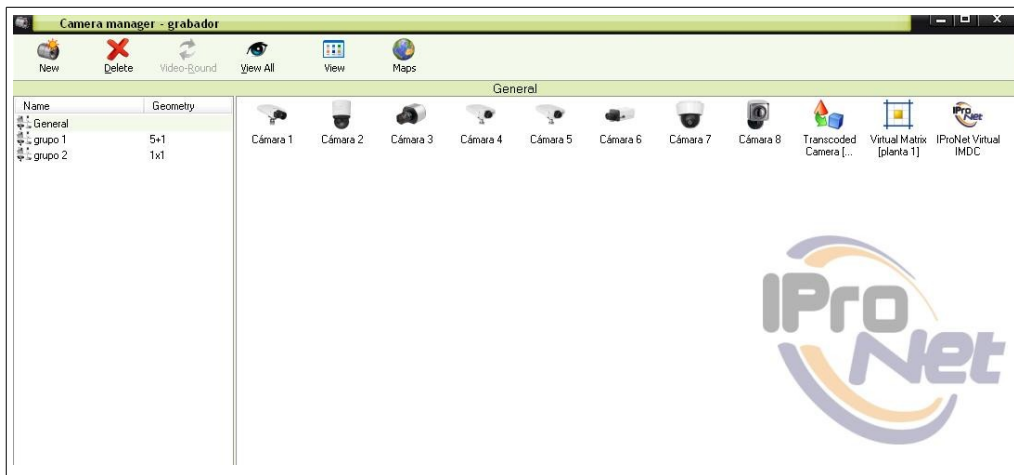


Figure 9. Icones View

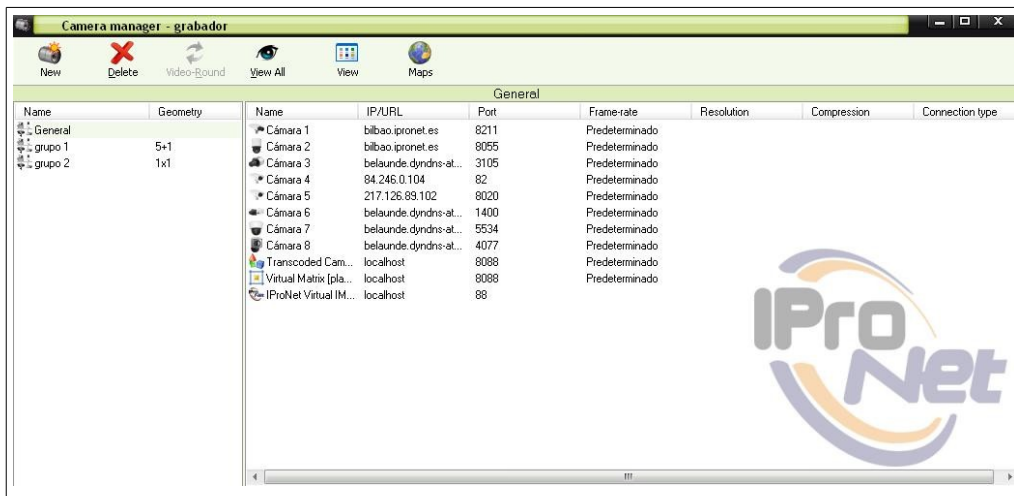


Figure 10. Details View

To view a camera -or group, or video patrol- it is sufficient to simply double-click with the left hand mouse button on the corresponding icon .

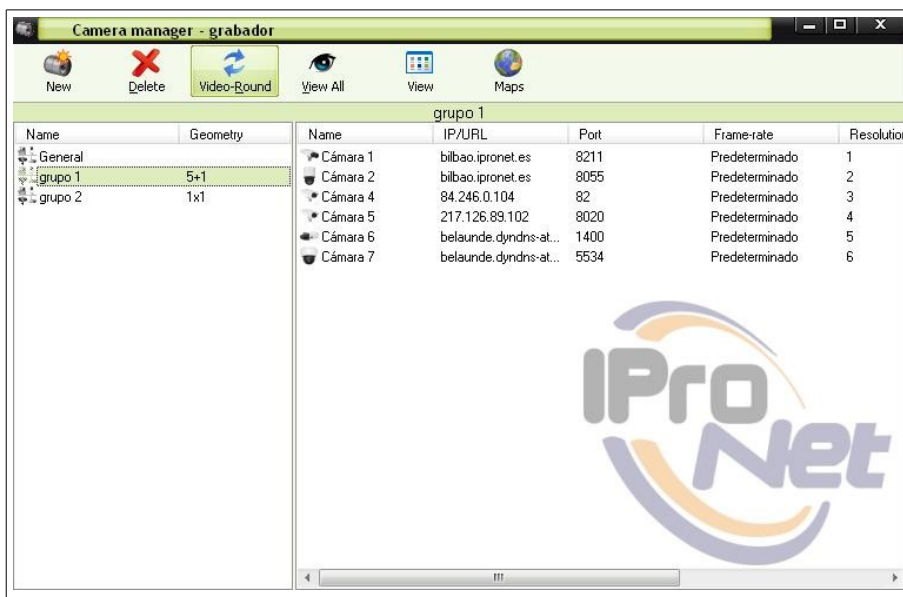


Figure 11. Viewing

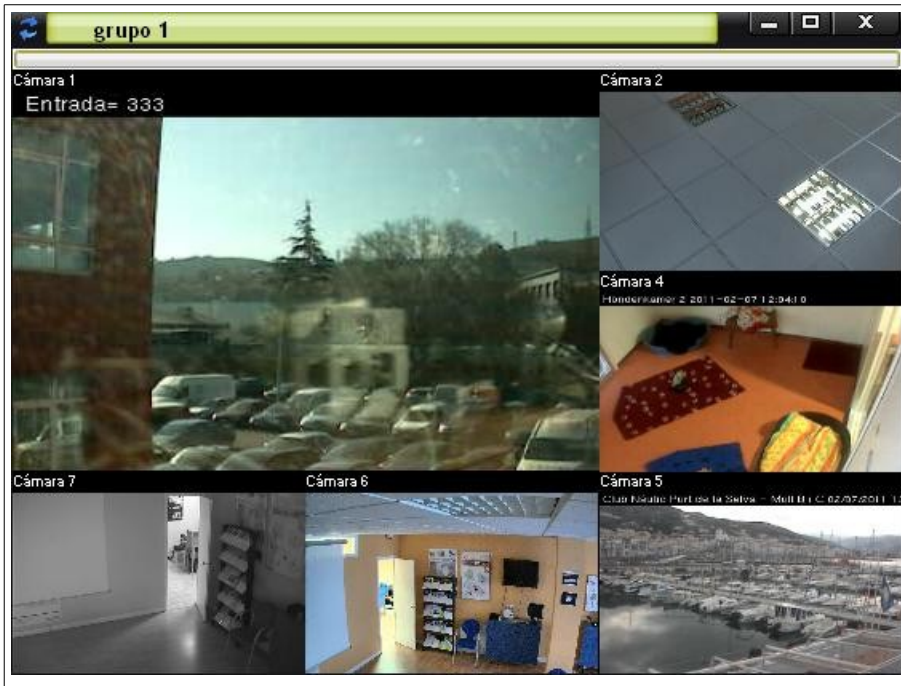


Figure 12. Video Patrol Example

By clicking on the tool bar of the cameras, the icons corresponding to the viewing settings, movement settings, prepositions and activation settings will appear and will be available for use from the application itself .

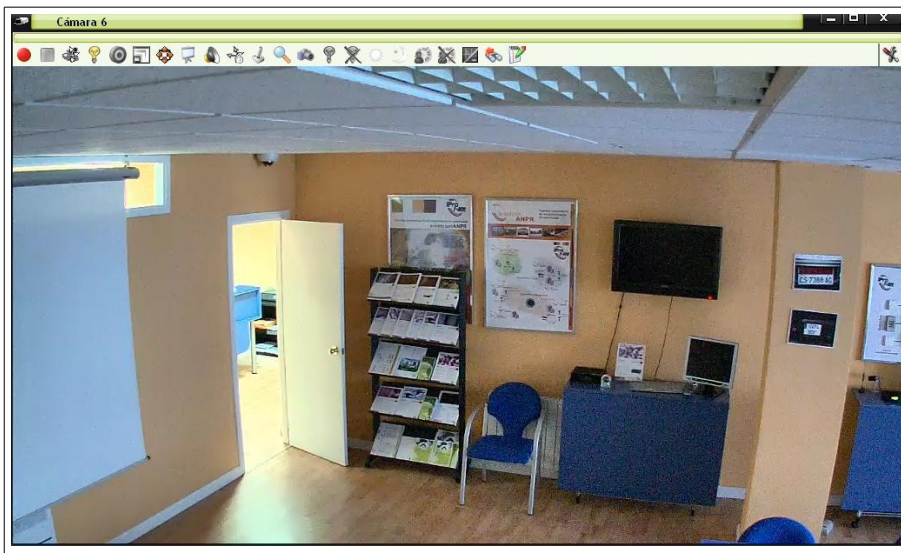


Figure 13. Tool bar of the camera

## Recordings

To be able to access the different recordings housed in the remote server we need to select that point from the menu that appears when you click on the icon at the bottom right hand corner of the desktop .



Figure 14. Select Recordings

Once it is selected, the system will display the list of recordings that are hosted on the server. The user may carry out the search tasks in the same way that is performed in the e-netcamCLIENT application.

Type	Camera	Start date	End date	Length	Images	WM	Expiration date	Protected	When expired
Alarm	Cámara 2	26/01/2011 10:50:39	26/01/2011 10:50:48	00:00:09	29	No		No	
On-demand	Cámara 1	26/01/2011 10:53:21	26/01/2011 12:10:00	01:16:39	18564	No		No	
Alarm	Cámara 2	26/01/2011 11:23:11	26/01/2011 11:23:20	00:00:09	12	No		No	
Alarm	Cámara 2	26/01/2011 11:23:42	26/01/2011 11:23:51	00:00:09	16	No		No	
Alarm	Cámara 2	26/01/2011 11:24:21	26/01/2011 11:24:30	00:00:09	14	No		No	
Alarm	Cámara 2	26/01/2011 12:10:30	26/01/2011 12:10:49	00:00:19	54	No		No	
On-demand	Cámara 1	26/01/2011 13:34:32	26/01/2011 15:13:59	01:39:27	29610	No		No	
Scheduled	Cámara 4	26/01/2011 13:36:07				No		No	
Alarm	Cámara 2	27/01/2011 10:16:56	27/01/2011 10:17:05	00:00:09	72	No		No	
On-demand	Transcoded Camera [Cá...	27/01/2011 10:25:01	27/01/2011 10:26:44	00:01:43	197	No		No	
Alarm	Cámara 2	27/01/2011 10:36:38	27/01/2011 10:36:48	00:00:09	8	No		No	
Alarm	Cámara 2	27/01/2011 10:52:57	27/01/2011 10:53:06	00:00:09	59	No		No	
Alarm	Cámara 2	27/01/2011 11:09:21	27/01/2011 11:09:30	00:00:09	42	No		No	
Alarm	Cámara 2	27/01/2011 11:15:29	27/01/2011 11:15:39	00:00:09	87	No		No	
Alarm	Cámara 2	27/01/2011 11:35:21	27/01/2011 11:35:30	00:00:09	46	No		No	
Alarm	Cámara 2	27/01/2011 11:52:13	27/01/2011 11:52:23	00:00:10	32	No		No	
Alarm	Cámara 2	27/01/2011 12:14:09	27/01/2011 12:14:19	00:00:10	94	No		No	
Alarm	Cámara 2	27/01/2011 13:21:25	27/01/2011 13:21:34	00:00:08	29	No		No	
Alarm	Cámara 2	27/01/2011 13:42:23	27/01/2011 13:42:33	00:00:10	68	No		No	
Alarm	Cámara 2	28/01/2011 10:08:01	28/01/2011 10:08:10	00:00:09	88	No		No	
Alarm	Cámara 2	28/01/2011 11:32:39	28/01/2011 11:32:48	00:00:09	59	No		No	
Alarm	Cámara 2	28/01/2011 11:33:39	28/01/2011 11:33:49	00:00:10	39	No		No	
Alarm	Cámara 2	28/01/2011 11:47:31	28/01/2011 11:47:41	00:00:10	73	No		No	
Alarm	Cámara 2	28/01/2011 12:58:30	28/01/2011 12:58:40	00:00:10	78	No		No	
Alarm	Cámara 2	28/01/2011 13:00:28	28/01/2011 13:00:38	00:00:10	79	No		No	
Alarm	Cámara 2	28/01/2011 13:31:08	28/01/2011 13:31:18	00:00:10	90	No		No	

Figure 15. List of Recordings

Once the desired recording is located, clicking on it twice will bring up the recording player device, with its operations being similar to the rest of the e-netcam application range. This is the display screen of the recording player device, in which, as it can be observed, all the functions of the e-netcamCLIENT application are found to be operative.

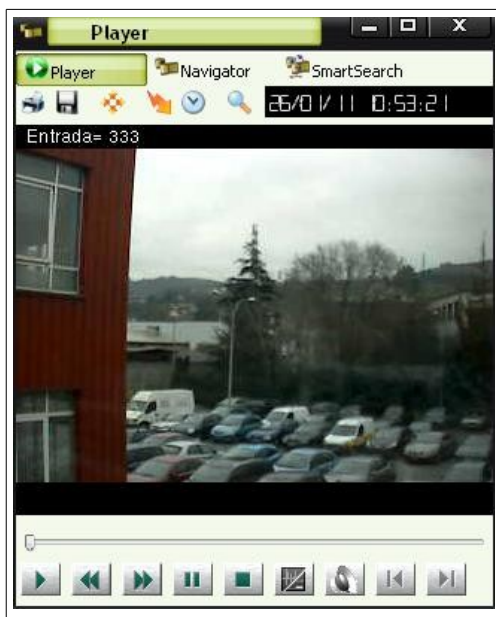


Figure 16. Player

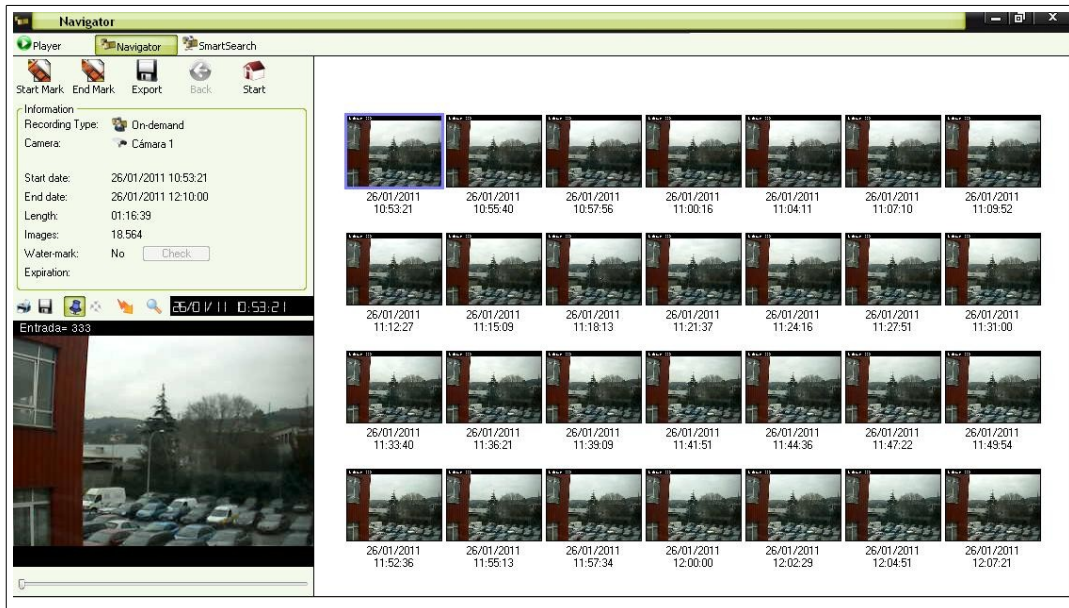


Figure 17. Navigator

## Task Scheduler

By means of this menu, we can access the e-netcamVIEWER application programmer. To obtain more information with respect to its operation, consult the e-netcamCLIENT application manual



Figure 18. Select Task Sheduler

## Language

The system is enabled to select different languages for use, for which one would simply need to choose the desired language from the menu option designated as “**Languages**”.



Figure 19. Select Language

Once a language is selected, it will be necessary to re-boot the application in order for the new language to be loaded automatically .

# Applications

The **e-netcamVIEWER** application is useful to remote users of IP video surveillance systems that are based on the **e-netcamCLIENT** application. There may be one or more users of the **e-netcamVIEWER** application all in the same system. The system will be particularly useful in the following examples:

**In Small Businesses:** Recording with the **e-netcamCLIENT** application or the **e-netcamRMS** application from the business shop and a remote connection to the **e-netcamVIEWER** application from the owner’s home.

**For Corporative Use:** Recording with the **e-netcamCLIENT** application or the **e-netcamRMS** application from one of the premises of the company and a remote connection to the **e-netcamVIEWER** application from: The Human Resources Department, the Central Security offices and from the office manager’s home.

An **e-netcamCLIENT** application or an **e-netcamRMS** application is necessary for each recording site and an **e-netcamVIEWER** application at each point of the remote connection. The **e-netcamVIEWER** application can be connected to a camera every time.

Example of the Application		
In Small Businesses	For Corporative Use	
From the business shop	Recording with: <b>e-netcamCLIENT</b> <b>e-netcamRMS</b>	From one of the premises of the company
From the home of the proprietor	Remote Connection to: <b>e-netcamVIEWER</b>	From: - Human Resources Department - Security Central Offices - Office Manager
1 <b>e-netcamCLIENT</b> or <b>e-netcamRMS</b> per recording and 1 <b>e-netcamVIEWER</b> at each point of connection.		

## Requirements

---

- e-netcamCLIENT / e-netcamRMS applications installed on a PC or on a server.
- LAN / WAN / Wi-Fi (802. xxx) Communications System.
- e-netcamCLIENT VIEWER application installed at each observation post.
- Microsoft Windows XP O.S. or any newer version.
- Latest version of Internet Explorer (see 6 or any newer version).
- Latest version of the installed DirectX application.